

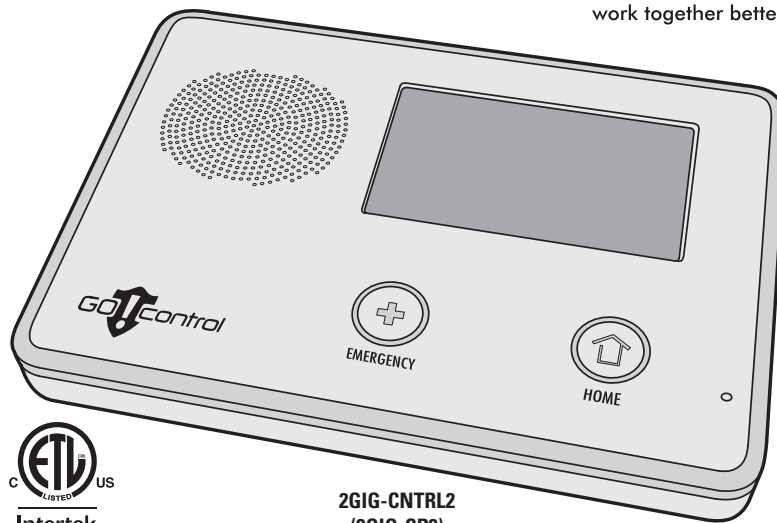
INSTR. Z-WAVE. 2GIG-CP2-348E.V1.9 - LINEAR P/N: 233494 X4 - INK: BLACK - MATERIAL: 20 LB. MEAD BOND WITH 90 LB. WHITE COATED COVER - SIZE: 5.500" X 8.500" - SCALE: 1:1 - FOLDING: ALBUM FOLD - BINDING: SADDLE-STITCH  
PRINTER'S INSTRUCTIONS:



## Wireless Security System



Products that speak Z-Wave  
work together better.™



2GIG-CNTRL2  
(2GIG-CP2)

## Z-Wave Services Operation & User's Guide

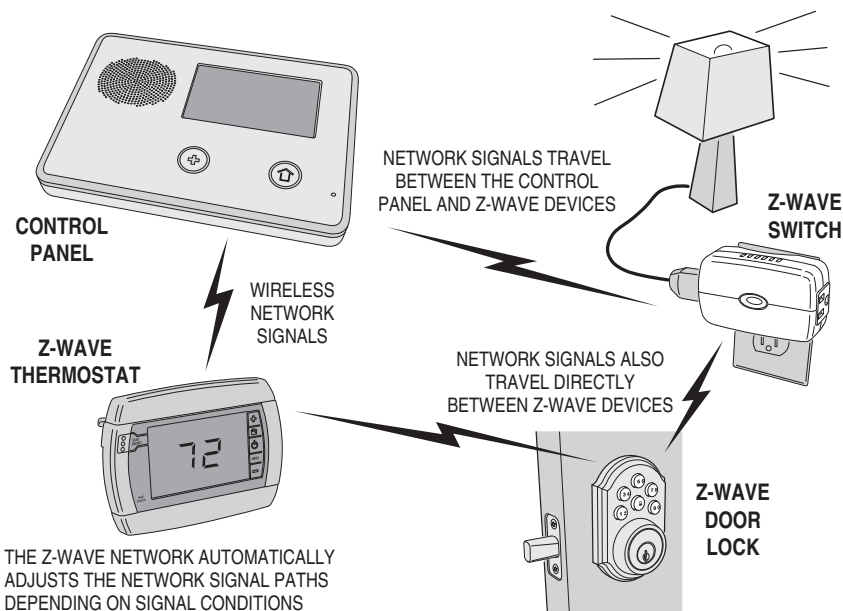


## The GO!Control Security System

Congratulations on your ownership of a Go!Control Security System! This wireless system offers protection for your property against burglary, protection for yourself and family with 24-hour emergency monitoring, and optionally fire and carbon monoxide detection for your home.

With the system's built-in Z-Wave<sup>®</sup> home automation capability, you can control your Z-Wave<sup>®</sup> enabled household lights, appliances, and door locks from the Control Panel or from a portable Z-Wave remote controller.

An exciting feature of the Go!Control Security System is the capability to remotely control your Z-Wave<sup>®</sup> network of devices from your own computer using a Web browser over the Internet. This provides you with home automation control from anywhere in the world... even through your Web enabled cell phone or PDA! (Web remote control is an optional feature, check with your security professional for availability with your system.)



*Typical Z-Wave Network*

## Table of Contents

<b>Home Control Network Overview</b>	
The Z-Wave Network . . . . .	2
Z-Wave Association Reports . . . . .	2
<b>Services Access</b>	
Services Button . . . . .	3
Device Management . . . . .	3
Toolbox . . . . .	3
<b>Network Setup</b>	
Adding Devices . . . . .	4
Additional Z-Wave Devices . . . . .	4
Z-Wave Sirens . . . . .	4
Naming Devices . . . . .	5
<b>Basic Operation</b>	
Binary Switches . . . . .	6
Multi-level Switches . . . . .	7
Viewing Thermostats . . . . .	8
Controlling Thermostats . . . . .	9
Setting the Mode . . . . .	9
Setting the Temperature . . . . .	9
Setting the Fan Mode . . . . .	9
Door Locks . . . . .	10
Auto Disarm . . . . .	10
Door Lock User Codes . . . . .	11
<b>Scenes &amp; Rules</b>	
Controlling Multiple Devices . . . . .	12
Creating Scenes . . . . .	12
Z-Wave Switches . . . . .	13
Z-Wave Thermostats . . . . .	13
Z-Wave Door Locks . . . . .	13
Testing Scenes . . . . .	13
Editing Scenes . . . . .	14
Changing a Device's Action . . . . .	14
Removing a Device's Action . . . . .	14
Renaming a Scene . . . . .	14
Running Scenes . . . . .	15
Deleting Scenes . . . . .	15
Triggering Devices from Events . . . . .	16
Creating Rules . . . . .	16
Editing Rules . . . . .	17
Changing a Rule's Action . . . . .	17
Deleting Rules . . . . .	17
<b>Network Maintenance</b>	
Removing Devices . . . . .	18
Network Diagnostics . . . . .	19
Checking the Network . . . . .	19
<b>Advanced Setup</b>	
Advanced Toolbox . . . . .	20
Learn Controller . . . . .	20
Reset Controller . . . . .	20
View Controllers . . . . .	21
View All Devices . . . . .	21
Rediscover Network . . . . .	22
<b>Important Information</b>	
Limited Warranty . . . . .	23
FCC Regulatory Information . . . . .	23
IC Regulatory Information . . . . .	23
Radio Compatibility . . . . .	23
<b>Index</b>	

## **Home Control Network Overview**

---

### ***The Z-Wave Network***

Z-Wave® is “interoperable, two-way RF mesh networking technology.” In plain English, Z-Wave® allows you to remotely control Z-Wave® enabled devices in your home. **Z-Wave is a registered trademark of Zensys Inc. and/or its subsidiaries.**

Z-Wave enabled devices are remote control modules that lights or appliances plug into or accessories with built-in Z-Wave capabilities that are designed to work with all other Z-Wave enabled devices in a home control network. Some modules can act as a wireless “repeater” that extends the range of the system and insures that commands intended for another device in the network are received.

The wireless range of Z-Wave devices have a standard, open-air, line-of-sight distance of 65 feet. The actual performance in a home will depend on the type on construction, amount of metal between devices, and the number of Z-Wave devices that are repeating the wireless signals.

Beyond simple controlling of a single device, multiple device control commands can be assigned using a “Scene”. A Scene can be run on its own, or “Rules” can be assigned to trigger a Scene after a Control Panel “event” such as arming your system or when an alarm occurs.


The Go!Control Security System’s Z-Wave Services is a security enabled Z-Wave product, and has been designed to operate with Z-Wave certified binary (on/off) switches, multi-level (dimmer) switches, thermostats, door locks, remote sirens, and portable controllers available from a variety of equipment manufacturers.

### ***Z-Wave Association Reports***

The Control Panel stores Association reports from Z-Wave devices that are able to send those reports. These supported devices are not queried for their settings, resulting in a faster display of the device’s status on the Control Panel’s screen, especially with battery-operated Z-Wave devices. Storing Association reports can also improve battery life of the Z-Wave device, due to the elimination of polling information from these devices.

## Services Access

### Services Button

Services are accessed through the system's Home Screen. The Home Screen shows the system status with icons to indicate system conditions. It also displays the time and date. The Home Screen displays the **SECURITY** and **SERVICES** buttons. The Home Screen is normally displayed when the system is disarmed. If it is not currently being displayed, pressing the  button on the Control Panel will display the Home Screen.

### Device Management

Setup and control of Z-Wave devices is accessed by pressing the **SERVICES** button and using the Manage Z-Wave Devices Screen.

This screen displays buttons for controlling various Z-Wave devices and a button to access the Z-Wave toolbox. **(Some Services buttons may or may not display depending on options selected by your Installer).**

- The **SWITCHES** button will display the currently included binary and multi-level switches.
- The **THERMOSTATS** button will display the currently included thermostat devices.
- The **DOOR LOCKS** button will display the currently included door lock devices.
- The **RULES** button will display the currently programmed Rules that run Scenes after events.
- The **SCENES** button will display currently programmed Scenes that run device actions.
- The **CHECK NETWORK** button tests the connection of all programmed Z-Wave devices.
- The **TOOLBOX** button allows access to the Z-Wave toolbox for setup of devices (requires entry of the Master User Code, if enabled).

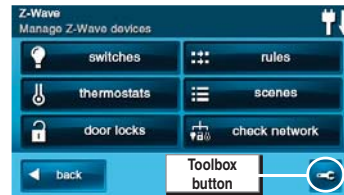
### Toolbox

Z-Wave setup is performed using the Toolbox. Access the Toolbox using the following steps.

1. From the Manage Z-Wave Devices Screen, press the **TOOLBOX** button.
  2. Enter the Master User Code. If enabled, only the Master User Code (or the Installer Code) can be used to access the Z-Wave Toolbox.
- ✓ **NOTE:** Some Z-Wave display screens will time-out after 30 seconds of inactivity and the system will return to the Home Screen.



The Home Screen



Manage Z-Wave Devices Screen



Master Code Entry Screen



Z-Wave Toolbox Screen

## Network Setup

### Adding Devices

Before a device will work in the home control network, it must be added (also called included) into the network.

To add one or more devices into the network, use the following steps:

1. Install the Z-Wave Device as directed by the device's instructions. If it is a lamp or appliance module, connect the lamp or load to the module and be sure the power switch on the lamp or load is ON.
2. From the Toolbox Screen, press the **ADD DEVICES** button. The Control Panel will display "Discovering devices" and wait for a signal from a device.
3. Press and quickly release the program button on the device. (This button may also be called "bind", "learn", or may not be labeled.)
4. When the device is discovered, the display will show its kind, type, manufacturer, and network node information assigned to the device.
5. Repeat Steps 3 and 4 for any additional devices that need to be added to the network at this time.
6. Press **BACK** when finished.

### Additional Z-Wave Devices

If additional Z-Wave compatible devices are purchased, and your home control network expands, these steps can be used at any time to add additional devices.

Devices can only be included once in the network. The system will not allow a device to be added multiple times to the same network.

### Z-Wave Sirens

Two models of Z-Wave remote sirens are supported:

- Everspring SE812-2
- FortrezZ 8156A-Z3X

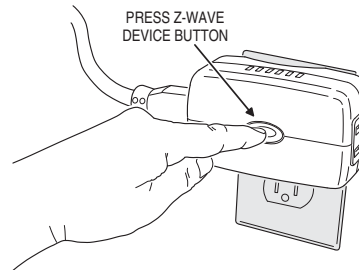
A Z-Wave remote siren will sound when the Control Panel's siren sounds. Depending on setup by your installer, the Z-Wave siren will sound for burglary, or for burglary and fire/CO alarms.



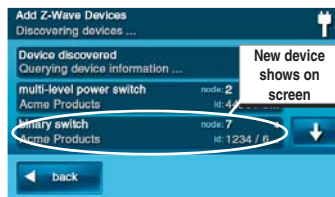
Z-Wave Toolbox Screen



Add Z-Wave Devices Screen



Pressing the Device's Programming Button



Added Devices Shown

- ✓ **NOTE FOR EXISTING INSTALLATIONS:**  
If Z-Wave devices have been previously installed and the Control Panel has been upgraded, to use the Z-Wave Association feature, remove then re-add all previously installed Z-wave devices.

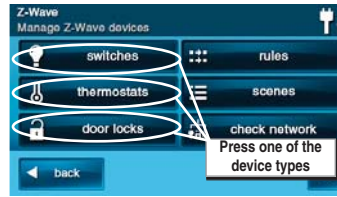
# Network Setup

## Naming Devices

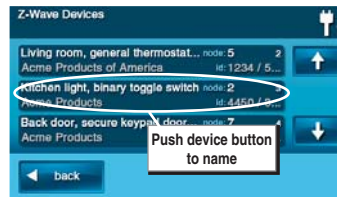
Devices in the home control network can be named to make it easy to identify the individual lamp or appliance being controlled. The custom name will show on the Control Panel's display.

To name each installed switch, lock or thermostat device, use the following steps:

1. From the Manage Z-Wave Devices Screen, press the **SWITCHES**, **THERMOSTATS**, or **DOOR LOCKS** button.
2. A list of installed devices will display. If there are more than three devices, use the ↑ or ↓ arrows to scroll the list.
3. Press the display where the device is listed to display the current switch settings for the device.
4. Press the **RENAME**  $A_z$  button to display the alphanumeric keyboard used to name the device.
5. Use the alphanumeric keyboard to assign a name (up to 40 characters) to the device.
  - Use the ↑ arrow key to shift to capital letters.
  - Use the ↓ arrow key to shift to lower case letters.
  - Press the @!# key to access numeric and symbol characters.
  - Press the abc key to access alphabetic characters.
  - Use the  $\boxtimes$  (delete) key to delete characters to the right of the cursor or delete highlighted text.
  - Use the  $\boxleftarrow$  (backspace) key to delete characters to the left of the cursor.
  - Use the ← or → arrows to move the cursor along the text.
6. Press **OK** when you are finished naming the device.
7. Press **BACK**.
8. Repeat Steps 2 through 7 to name additional devices.
9. Press **BACK** when finished.



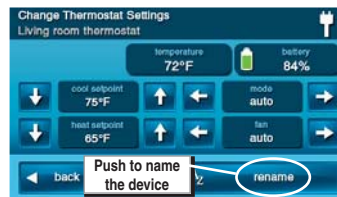
Manage Z-Wave Devices Screen



Installed Devices Shown



Switch Settings Display



Thermostat Settings Display



Door Locks Settings Display




Alphanumeric Keyboard Display

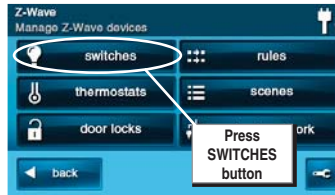
## Basic Operation

### Binary Switches

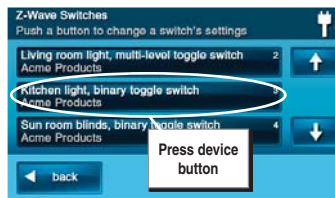
Binary switch modules can be turned ON or OFF. They cannot be set to in-between levels as multi-level (dimmer) switch modules can.

To control a binary switch module, use the following steps:

1. From the Home Screen press the **SERVICES** button.
2. From the Manage Z-Wave Devices Screen, press the **SWITCHES** button.
3. A list of all installed switches will be displayed. If there are more than three switches, use the ↑ or ↓ arrows to scroll the list.
4. Press the display where the device is listed to display the control buttons for the switch.
5. The display indicates if the switch is OFF or ON. Press the desired action for the switch (OFF or ON). The lamp or load connected to the selected binary switch module will follow your command.
6. Press the **BACK** button three times or the  button on the Control Panel to exit Services.



*Manage Z-Wave Devices Screen*



*Installed Switches Shown*



*Binary Switch Settings Display*




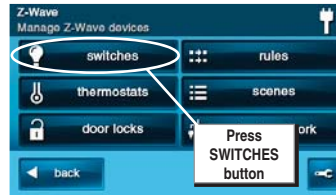
## Basic Operation

### Multi-level Switches

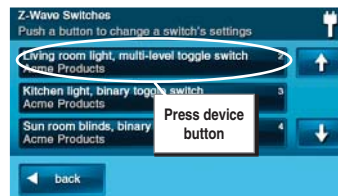
Multi-level (dimmer) switch modules can be turned ON, OFF, or set to 12 different dimming levels.

To control a multi-level switch module, use the following steps:

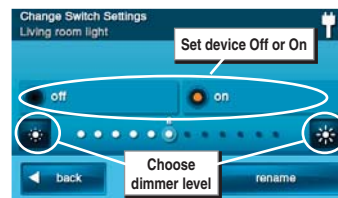
1. From the Home Screen press the **SERVICES** button.
2. From the Manage Z-Wave Devices Screen, press the **SWITCHES** button.
3. A list of all installed switches will be displayed. If there are more than three switches, use the ↑ or ↓ arrows to scroll the list.
4. Press the display where the device is listed to display the control buttons for the switch.
5. The display indicates if the switch is OFF or ON. If the switch is ON, the dimming level with a number 1-12 will be shown below. Press the desired action for the switch; OFF, ON, or adjust the dimming level using the brightness buttons at each end of the dimming level display. The lamp connected to the selected multi-level switch module will follow your command.
6. Press the **BACK** button three times or the  button on the Control Panel to exit Services.



Manage Z-Wave Devices Screen



Installed Switches Shown



Multi-level Switch Settings Display

## Basic Operation

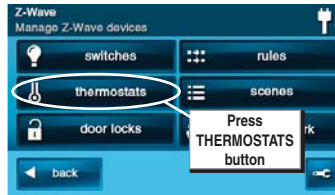
### Viewing Thermostats

Z-Wave compatible thermostats can be controlled using the Services feature.

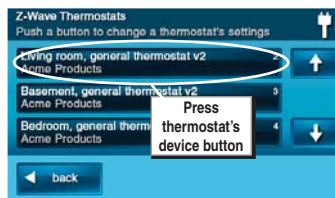
- ✓ **NOTE:** Several types of Z-Wave compatible thermostats are available. Each type provides different features. All thermostat Z-wave features are supported, except for scheduling.

To view the thermostat control, use the following steps:

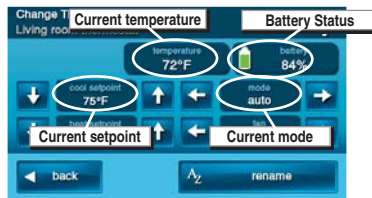
1. From the Home Screen press the **SERVICES** button.
  2. From the Manage Z-Wave Devices Screen, press the **THERMOSTATS** button.
  3. A list of all installed thermostats will be displayed. If there are more than three thermostats, use the ↑ or ↓ arrows to scroll the list.
  4. Press the display where the thermostat is listed to display the control buttons for the thermostat.
  5. The display shows the current temperature, the thermostat setpoint, the thermostat's battery status, the thermostat mode, and the fan mode. When the thermostat mode is "auto", 2 setpoints are displayed, "heat" and "cool". All thermostat indications that are available through Z-wave are supported.
- ✓ **NOTE:** Thermostats can be powered by the HVAC system's 24-volt AC power source (called a C-wire or common wire system) or be independently powered by batteries. To save power, battery powered thermostats send signals to the Control Panel at intervals and may not update the Control Panel's display for a short period of time.



Manage Z-Wave Devices Screen



Thermostat Select Screen



Thermostat Settings Screen

## Basic Operation

### Controlling Thermostats

To adjust a thermostat's settings, use the following steps.

- ✓ **NOTE:** Several types of Z-Wave compatible thermostats are available. Each type will display different supported options.

### Setting the Mode

1. Use the ← or → arrows on each side of the mode display to choose between off, heat, cool, auto, auxilliary heat, resume, fan only, furnace, dry air, moist air, auto changeover, energy save heat, energy save cool, or away heat modes.
2. The thermostat will immediately switch to the mode selected.

### Setting the Temperature

1. Each thermostat mode (except OFF) can be set to a temperature setpoint. Use the ↓ or ↑ arrows to choose a temperature setpoint for the current mode displayed. When the thermostat mode is "auto", 2 setpoints are displayed, "heat" and "cool".
2. The temperature setpoint is immediately transmitted to the thermostat.

### Setting the Fan Mode

If the thermostat supports Z-Wave fan control, the fan mode selector will be displayed.

1. Use the ← or → arrows on each side of the fan mode display to choose between **MANUAL**, **AUTO**, **MANUAL HIGH**, **MANUAL LOW**, **AUTO HIGH**, or **AUTO LOW** (NOTE: Only modes supported by the thermostat will be displayed).
2. The thermostat will set the system's fan to the selected mode. Manual modes are displayed in yellow to indicate that the fan will remain on and will not be automatically controlled by the heating or cooling system.



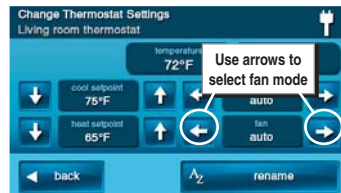
Thermostat Settings Screen



Selecting a Mode



Selecting a Setpoint



Selecting the Fan Mode

## Basic Operation


### Door Locks

Z-Wave door locks can be locked or unlocked from the Control Panel, at the lock with the lock's keypad, or with the lock's metal key.

The currently supported Z-Wave lock models available are:

- Kwikset Smartcode Deadbolt
- Kwikset Smartcode Lever
- Yale Real Living Push Button Deadbolt
- Yale Real Living Touchscreen Deadbolt
- Schlage Wireless Keypad Deadbolt
- Schlage Wireless Keypad Lever

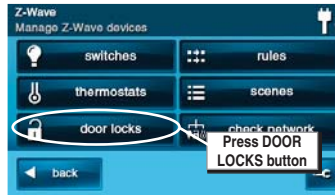
To control a Z-Wave door lock, use the following steps:

1. From the Home Screen press the **SERVICES** button.
  2. From the Manage Z-Wave Devices Screen, press the **DOOR LOCKS** button.
  3. A list of all installed door locks will be displayed. If there are more than three door locks, use the ↑ or ↓ arrows to scroll the list.
  4. Press the display where the device is listed to display the control buttons for the door lock.
  5. The upper left of the display shows the door lock's current status (locked or unlocked). The lower left of the display shows the door locks battery condition.
  6. To control the door lock, press the large **LOCK** or **UN-LOCK** action button.
  7. Press the **BACK** button three times or the  button on the Control Panel to exit Services.
- ✓ **NOTE:** The Control Panel supports, but the Schlage Wireless Keypad Deadbolt does not support remote unlocking & locking.

### Auto Disarm

The system supports an option to disarm the Control Panel when the door lock is unlocked from its keypad.

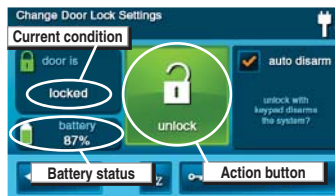
1. On the Change Door Locks Settings Screen, check the **AUTO DISARM** option to automatically disarm the Control Panel whenever the door lock is opened from the lock's keypad.
- ✓ **NOTE:** If the user has been setup with a User Access Schedule, or if the user has been disabled, the Control Panel will not disarm if the user's access is currently invalid. The lock will still operate.
- ✓ **NOTE:** If auto-disarm is enabled, it is not recommended to arm the system away with no delay. Doing so may cause the system briefly to trigger an alarm when the door is unlocked, due to the (short) delay between the door being unlocking and the panel disarming.



Manage Z-Wave Devices Screen



Door Lock Select Screen



Door Lock Settings Screen



Door Lock Screen After Pressing Un-Lock




Auto Disarm Option

## Basic Operation

### Door Lock User Codes

Each Control Panel user (1-32) can be assigned Door Lock User Codes for controlling one or more Z-Wave locks. **The user's Door Lock User Codes are independent of the user's Control Panel User Code that arms and disarms the system.** Door Lock User Codes cannot be added, removed, or changed directly from the lock. To add, remove, or change these codes, use the following steps:

1. On the Change Door Locks Settings Screen, press **CODES**.

2. Enter the Master User Code to access the Door Lock User Codes Screen.
  - If the user has been disabled, the "disabled user" icon (a red X) will be displayed.
  - Users with access schedules will have the calendar icon displayed.
  - If a user already has a Door Lock User Code set, the code will be displayed. If a code has not been set, **UNASSIGNED** will be displayed.
  - If **UNKNOWN** is displayed, press the refresh  icon to sync with the lock. If there is a code in the lock for this user, the panel will acquire it. If the lock doesn't have a code for this user, **UNASSIGNED** will be displayed.
  - If **NOT SUPPORTED** is displayed, the user number is greater than the maximum number of users allowed by the lock. This user number cannot be assigned to the lock.

- ✓ **NOTE:** Schlage locks only support 19 users and can be programmed to users 1-19.

- ✓ **NOTE:** Kiwkset locks only support 30 users and can be programmed to users 1-30.

- To remove an existing Door Lock User Code, press the delete  icon next to the user button.

3. Select a user to modify from the Door Locks User Codes screen.

4. Enter the user's new 4-8 digit Door Lock User Code, then enter it again to verify the code.

5. A progress screen will be displayed while the new code is being sent to the door lock.

6. A confirmation screen will be displayed when the user's lock code has been set. Press **OK**.

7. Test the new code by entering it on the door lock's keypad.

8. If the Auto Disarm option is set, test it by arming the system then un-locking the door lock with the lock's keypad. The system should disarm when the door lock is un-locked.

- ✓ **NOTE:** For security, the default internal Master Code in Yale door locks should always be changed (at the lock). This code is not related to any Control Panel or Door Lock User Code.



Door Lock User Code Option



Door Locks User Codes Screen



Removing and Refreshing Door Lock User Codes



Door Lock Code Entry Screen



Door Locks User Code Confirmation Screen

## Scenes & Rules

### Controlling Multiple Devices

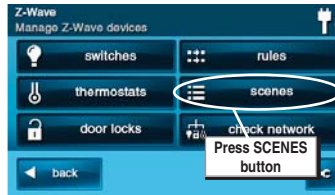
Beyond simple controlling of a single device, multiple device control commands can be assigned using a "Scene". A Scene can be run on its own, or "Rules" can be assigned to trigger a Scene after a Control Panel "event" such as arming your system or when an alarm occurs.

### Creating Scenes

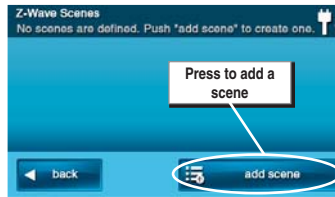
Scenes are created by assigning one or more device actions to the Scene. The multi-function Scene can then be easily executed by pressing the Scene's **RUN** button.

To create a Scene, use the following steps:

1. From the Home Screen press the **SERVICES** button.
2. From the Manage Z-Wave Devices Screen, press the **SCENES** button.
3. From the Z-Wave Scenes Screen press the **ADD SCENE** button.
4. Use the alphanumeric keypad displayed to enter a name for the new Scene. Press **OK** when finished.
5. To select actions for the scene, press the **ADD** button.
6. Press **Z-WAVE SWITCH**, **Z-WAVE THERMOSTAT**, or **Z-WAVE DOOR LOCK** to add one of these device types as an action to the Scene.



Manage Z-Wave Devices Screen



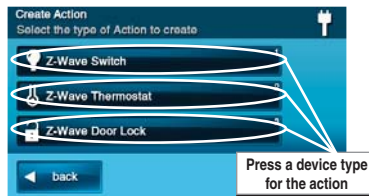
Z-Wave Scenes Screen



Naming a Scene



Select Action for the Scene

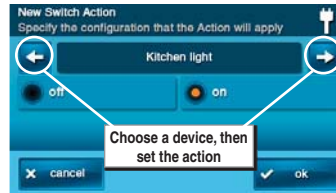


Adding an Action to a Scene

## Scenes & Rules

### Z-Wave Switches

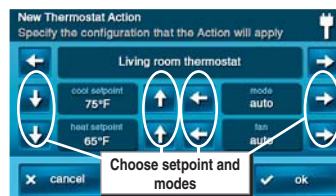
**7A.** Use the ← or → arrows to choose a switch device (if there is more than one device), then select an ON, OFF, or a dimming level for the switch. Press **OK**.



*New Switch Action Screen*

### Z-Wave Thermostats

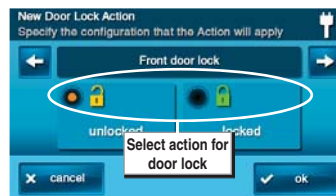
**7B.** Use the ← or → arrows to choose a thermostat device (if there is more than one device), then select a mode, setpoint, and fan setting for the thermostat. Press **OK**.



*New Thermostat Action Screen*

### Z-Wave Door Locks

**7C.** Use the ← or → arrows to choose a door lock device (if there is more than one device), then select a UN-LOCKED or LOCKED. Press **OK**.



*New Door Lock Action Screen*

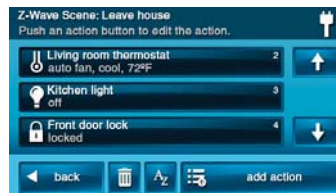
✓ **NOTE:** The device will not activate while setting Steps 7A, 7B, & 7C. The scene must be “run” or triggered by an event with a “rule”.

### Testing Scenes

**8.** The assigned action(s) for the Scene will be displayed. Repeat Steps 5 through 7 to add additional actions to the Scene. Press **BACK** when finished.

✓ **NOTE:** Only one action per device can be assigned per Scene.

**9.** Test the Scene by pressing **RUN**. A Scene execution confirmation screen will be displayed, press **OK**.



*New Scene with Set Actions*



*Scenes Screen with RUN Button*

## Scenes & Rules

### Editing Scenes


Scenes can be edited to change a device's action, remove a device's action, or rename the Scene.

To edit a Scene, use the following steps.

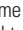
#### Changing a Device's Action

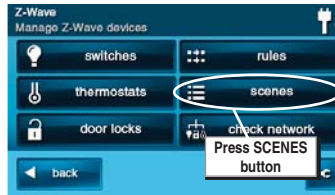
1. From the Home Screen press the **SERVICES** button.
2. From the Manage Z-Wave Devices Screen, press the **SCENES** button.
3. A list of programmed Scenes will be displayed. Press the name of the Scene to edit.
4. Press the desired device's button to select it.
5. Change the configuration for the device and press **OK**, then press **BACK**.
6. Test the Scene by pressing the **RUN** button. A Scene execution confirmation screen will be displayed, press **OK**.

#### Removing a Device's Action

1. From the Home Screen press the **SERVICES** button.
2. From the Manage Z-Wave Devices Screen, press the **SCENES** button.
3. A list of programmed Scenes will be displayed. Press the name of the Scene to edit.
4. Press the desired device's button to select it.
5. Press the delete  icon. A confirmation screen will be displayed, press **DELETE ACTION** to confirm, or **CANCEL** to quit without deleting.

#### Renaming a Scene

1. From the Home Screen press the **SERVICES** button.
2. From the Manage Z-Wave Devices Screen, press the **SCENES** button.
3. A list of programmed Scenes will be displayed. Press the name of the Scene to rename.
4. Press the  name icon. Use the alphanumeric keypad displayed to rename the Scene.
5. Press **OK** to confirm the name change or **CANCEL** to quit.



Manage Z-Wave Devices Screen



Selecting a Scene



Selecting an Device Action to Edit



Deleting an Action



Renaming a Scene



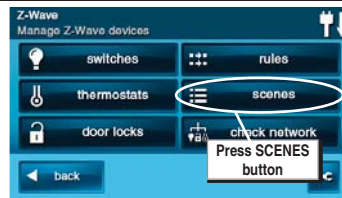
## Scenes & Rules

### Running Scenes

Scenes can be run by hand manually, or be automatically run when triggered by a Rule.

To run a Scene manually, use the following steps:

1. From the Home Screen press the **SERVICES** button.
2. From the Manage Z-Wave Devices Screen, press the **SCENES** button.
3. A list of programmed Scenes will be displayed.
4. Press the **RUN** button next to the desired Scene.
5. A Scene execution confirmation screen will be displayed, press **OK**.



Manage Z-Wave Devices Screen



Running a Scene




Scene Executed Screen

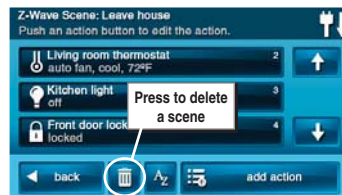
### Deleting Scenes

Scenes can be deleted individually.

- ✓ **NOTE:** Deleting a Scene will also delete any Rule associated with the Scene.

To delete a Scene, use the following steps.

1. From the Home Screen press the **SERVICES** button.
2. From the Manage Z-Wave Devices Screen, press the **SCENES** button.
3. A list of programmed Scenes will be displayed. Press the name of the Scene to delete.
4. Press the delete  icon. A confirmation screen will be displayed, press **DELETE SCENE** to confirm, or **CANCEL** to quit without deleting.
5. A Scene Deleted confirmation screen will be displayed, press **OK**.



Deleting a Scene



Scene Delete Confirmation Screen



Scene Deleted Screen

## Scenes & Rules

### Triggering Devices from Events

A Scene can be run on its own, or "Rules" can be assigned to trigger a Scene after a Control Panel "event" such as arming your system or when an alarm occurs.

- ✓ **NOTE:** Rules are normally run locally using the Control Panel, your installer may have set the Control Panel to only run rules remotely. Check with your installer.

### Creating Rules

Rules are created by assigning a Scene to run for an event that occurs.

To create a Rule, use the following steps:

1. From the Home Screen press the **SERVICES** button.
2. From the Manage Z-Wave Devices Screen, press the **RULES** button.
3. From the Event Rules Screen press the **ADD RULE** button.
4. Use the ← or → arrows to choose a system event to trigger the Scene. The events available are:
  - System Armed Away
  - System Armed Stay
  - System Disarmed
  - Exit Delay Started
  - Entry Delay Started
  - Fire or CO Alarm
  - Alarm
  - Audible Alarm
  - Auxiliary Alarm
  - Non-response Zone Opened
  - Non-response Zone Closed
5. Use the ← or → arrows to choose a Scene to run when the selected event occurs.
6. Press **OK** to create the Rule or **CANCEL** to quit.
7. Repeat Steps 3 through 6 to create additional Rules, or press **BACK** to quit.



Manage Z-Wave Devices Screen



Add Event Rules Screen



New Event Rules Screen



Selecting an Event



Selecting a Scene



Event Rules Screen Showing New Rule

## Scenes & Rules

### Editing Rules

Rules can be edited to change an event that triggers the Rule or to change the Scene that the Rule runs.

### Changing a Rule's Action

To change a Rule's action, use the following steps:

1. From the Home Screen press the **SERVICES** button.
2. From the Manage Z-Wave Devices Screen, press the **RULES** button.
3. A list of programmed Rules will be displayed. Press the name of the Rule to edit.
4. Use the ← or → arrows to choose a system event to trigger the Scene. The events available are:
  - System Armed Away
  - System Armed Stay
  - System Disarmed
  - Exit Delay Started
  - Entry Delay Started
  - Fire or CO Alarm
  - Alarm
  - Audible Alarm
  - Auxiliary Alarm
  - Non-response Zone Opened
  - Non-response Zone Closed
5. Use the ← or → arrows to choose a Scene to run when the selected event occurs (the scene can also be edited here by pressing the "Run this Scene" button).
6. Press **OK** to change the Rule or **CANCEL** to quit.

### Deleting Rules

Rules can be deleted individually. To delete a Rule, use the following steps:

1. From the Home Screen press the **SERVICES** button.
2. From the Manage Z-Wave Devices Screen, press the **RULES** button.
3. A list of programmed Rules will be displayed. Press the name of the Rule to delete.
4. Press **DELETE RULE**. A confirmation screen will be displayed, press **DELETE RULE** to confirm, or **CANCEL** to quit without deleting.
5. A Rule Deleted confirmation screen will be displayed, press **OK**.



Manage Z-Wave Devices Screen



Event Rules Screen



Editing the Selected Event



Editing the Selected Scene



Deleting a Rule

## Network Maintenance

### Removing Devices

When a device will no longer be used in the home control network, it should be removed (also called excluded) from the network so the system will not try to communicate with the missing device.

To remove one or more devices from the network, use the following steps:

1. From the Toolbox Screen, press the **REMOVE DEVICES** button. The Control Panel will display "Discovering devices" and wait for a signal from a device.
2. Press and release the program button on the device. (This button may also be called "bind", "learn", or may not be labeled.)
- ✓ **NOTE:** Some devices may require pressing the program button more than once, refer to the device's instructions.
3. When the device is discovered, the display will show "A device has been removed from the network...".
4. Repeat Steps 2 and 3 for any additional devices that need to be removed from the network at this time.
5. Press **BACK** when finished.

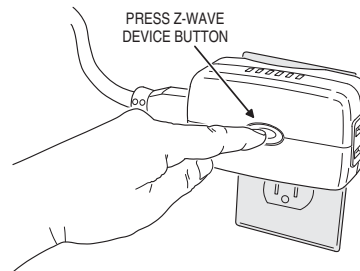
These steps can be used at any time to remove devices from the home control network.



Z-Wave Toolbox Screen



Remove Z-Wave Devices Screen



Pressing the Device's Programming Button



Removed Devices Display

## Network Maintenance

### Network Diagnostics



The Services Z-Wave network periodically checks to determine if a network device has become un-plugged, has failed, or is missing.

The network can also be checked manually by pressing the **CHECK NETWORK** button on the Manage Z-Wave Devices screen.

If there is a network issue, the **SERVICES** button on the Home Screen will display as **orange** instead of **blue**.

The **CHECK NETWORK** button will display as **orange** instead of **blue** if there is a network issue.

Use the following steps to correct a network issue.

1. Press the orange **SERVICES** button. The Manage Services Screen will be displayed.
2. The Z-Wave logo will be displayed, along with the trouble alert  icon. The trouble alert icon displays a number in the upper right corner that is the number of devices the network has detected trouble with.
3. Press the trouble alert  icon to display the device(s) the network has detected trouble with.
4. Go to the displayed devices location(s) and inspect for un-plugged or missing devices. Either correct the devices installation, or remove the device from the network using the following steps. Press **BACK** to exit without making any changes.
5. To remove a failed device, press the device's button on the Failed Devices Screen. Press **REMOVE FAILED DEVICE**. A confirmation screen will be displayed, press **OK**.

### Checking the Network

The Z-Wave network can be checked manually using the **CHECK NETWORK** button. Use the following steps:

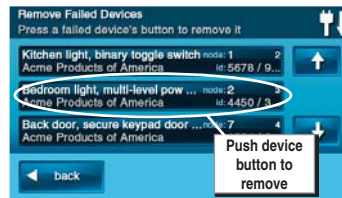
1. From the Manage Z-Wave Devices Screen, press the **CHECK NETWORK** button.
2. Wait while the system checks the network. **THIS MAY TAKE SEVERAL MINUTES.**
3. Any new or failed network nodes will be displayed.



Home Screen with Orange Button



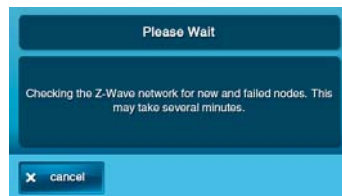
Trouble Alert Screen



Delete Failed Devices Screen



Device Removed Confirmation Screen



Checking Network Screen

## Advanced Setup

### Advanced Toolbox

The Advanced Toolbox can be used (only by Installers) to add a secondary controller, reset and view installed controllers, view the currently installed network devices, or rediscover the network devices.

On the Z-Wave Toolbox Screen, press **ADVANCED TOOLBOX** to access the Advanced Toolbox functions.

### Learn Controller

The Control Panel can be added to an existing Z-Wave network as a “secondary” controller (this process is also called replication).

When the Control Panel acts as a secondary controller, **devices will only be able to be added and removed by the primary controller**. Other than that, all functions are available to either controller.

Use the following steps to add the Control Panel as a secondary controller:

1. From the Advanced Toolbox Screen, press the **LEARN CONTROLLER** button. The Control Panel will display “Learning Z-Wave Controller” and wait for a signal from the primary controller.
2. Press and release the include button on the primary controller. (This button may also be called “bind”, “learn”, or may not be labeled.)
3. A confirmation screen will be displayed, press OK.

### Reset Controller

Resetting the controller will remove all Z-Wave devices from the network and controller. The network node information will also be reset.

Reset the controller only after removing all the devices one at a time using the **REMOVE DEVICES** button.

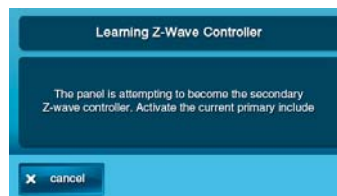
Use the following steps to reset the controller:

1. From the Advanced Toolbox Screen, press the **RESET CONTROLLER** button.
2. A reset confirmation screen will be displayed, press **RESET Z-WAVE CONTROLLER** to continue or **CANCEL** to exit.
3. A completion confirmation screen will be displayed, press **OK**.

To re-build the Z-Wave network, use the Add Devices function.



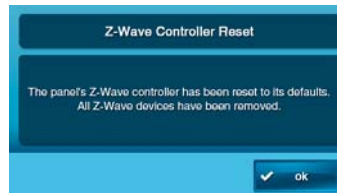
Advanced Z-Wave Toolbox



Learn Controller Screen



Reset Controller Screen



Reset Controller Screen

## Advanced Setup

### Advanced Toolbox (cont.)

#### View Controllers

The Control Panel can display each Z-Wave controller programmed into the network.

Use the following steps to display the controllers.

1. From the Advanced Toolbox Screen, press the **VIEW CONTROLLERS** button.
2. Each programmed controller will be displayed. Use the ↑ or ↓ arrows to scroll the display if more than three controllers are listed. The controller listings will show the controller's name, manufacturer, and network node number.
3. Press **BACK** to quit.



*View Controllers Screen*

#### View All Devices

Use the following steps to display all the devices programmed into the network.

1. From the Advanced Toolbox Screen, press the **VIEW ALL DEVICES** button.
2. Each programmed device will be displayed. Use the ↑ or ↓ arrows to scroll the display if more than three devices are listed. The controller listings will show the device's name, type/id number, manufacturer, and network node number.
3. Press **BACK** to quit.



*Z-Wave Devices Screen*

## Advanced Setup

---

### *Advanced Toolbox (cont.)*

#### **Rediscover Network**

During normal operation the network decides the best path to route signals from one device to another. If devices are moved to different positions in the installation, it is recommended to rediscover the network so the routing path will be re-configured.

Use the following steps to rediscover the network:

1. From the Advanced Toolbox Screen, press the **REDISCOVER NETWORK** button. The Control Panel will display "Rediscovering Z-Wave devices".
2. The system will pause, then return to the Advanced Toolbox.



***Rediscovering Network Screen***



## Important Information

### **Limited Warranty**

This 2gig Technologies Inc. product is warranted against defects in material and workmanship for twelve (12) months. **This warranty extends only to wholesale customers** who buy through 2gig Technologies Inc. authorized distribution channels. **2gig Technologies Inc. does not warrant this product to consumers.** Consumers should inquire from their selling dealer as to the nature of the dealer's warranty, if any. **There are no obligations or liabilities on the part of 2gig Technologies Inc. for consequential damages arising out of or in connection with use or performance of this product or other indirect damages with respect to loss of property, revenue, or profit, or cost of removal, installation, or reinstallation.** All implied warranties, including implied warranties for merchantability and implied warranties for fitness, are valid only until the warranty expires. **This 2gig Technologies Inc. Warranty is in lieu of all other warranties express or implied.**

For warranty service call your local alarm installation and service professional at the contact information shown on the back cover of this User's Guide.

### **FCC Regulatory Information**

This equipment generates and uses radio frequency energy and if not installed and used properly, that is, in strict accordance with the manufacturer's instructions, may cause interference to radio and television reception. It has been type tested and found to comply with the limits for a Class B computing device in accordance with Part 15 of FCC Rules, which are designed to provide reasonable protection against such interference in a residential installation. However, there is no guarantee that interference will not occur in a particular installation. If this equipment does cause interference to radio or television reception, which can be determined by turning the equipment off and on, the user is encouraged to try to correct the interference by one or more of the following measures:

- Relocate the Console away from the TV/radio receiver.
- Plug the Console into a different wall outlet so that the Console is on a different branch circuit.
- Re-orient the TV/radio antenna.
- If necessary, the user should consult the dealer or an experienced radio/television technician for additional suggestions.

### **IC Regulatory Information**

This Class B digital apparatus meets all requirements of the Canadian Interference Causing Equipment Regulations. Operation is subject to the following two conditions: (1) this device may not cause harmful interference, and (2) this device must accept any interference received, including interference that may cause undesired operation of the device.

Cet appareillage numérique de la classe B répond à toutes les exigences de l'interférence canadienne causant des règlements d'équipement. L'opération est sujette aux deux conditions suivantes: (1) ce dispositif peut ne pas causer l'interférence nocive, et (2) ce dispositif doit accepter n'importe quelle interférence reçue, y compris l'interférence qui peut causer l'opération peu désirée.

**WARNING:** Changes or modifications to this receiver not expressly approved by 2gig Technologies Inc. could void the user's authority to operate this equipment.

### **Radio Compatibility**

Z-Wave home control networks are designed to work properly alongside 802.11 wireless computer networks, Bluetooth and other 2.4 GHz or 5.8 GHz devices. Some baby cams, wireless video devices and older cordless phones using the 900 MHz frequency range may cause interference and limit the Z-Wave functionality.

## Index

---

### A

- Adding devices 4
- Additional Z-Wave devices 4
- ADD RULE button 16
- ADD SCENES button 12
- Advanced setup 20, 21, 22
- Advanced toolbox 20, 21, 22
- ADVANCED TOOLBOX button 20
- Auto disarm option 10

### B

- Basic operation 6, 7, 8, 9, 10, 11
- Binary switches 2, 6

### C

- Changing a devices action 14
- Changing a rules action 17
- Checking the network 19
- CHECK NETWORK button 3, 19
- Controlling multiple devices 12
- Controlling thermostats 9
- Creating rules 16
- Creating scenes 12

### D

- DELETE RULE button 17
- DELETE SCENE button 15
- Deleting rules 17
- Deleting scenes 15
- Device management 3
- Door Lock codes 11
- Door Lock options 11
- Door Locks 10, 11
- DOOR LOCKS button 10
- Door lock user codes 11

### E

- Editing rules 17
- Editing scenes 14
- Event 2

### F

- FCC regulatory information 23

### H

- Home Services button 3

### I

- IC regulatory information 23

### L

- Learn Controller 20
- LEARN CONTROLLER button 20
- Limited warranty 23
- LOCK button 10

### M

- Multi-level switches 2, 7

### N

- NAME button 14
- Naming devices 5
- Network diagnostics 19
- Network maintenance 18, 19
- Network setup 4, 5

### O

- Orange buttons 19

### R

- Radio compatibility 23
- Rediscover network 22
- REDISCOVER NETWORK button 22
- REMOVE DEVICES button 18, 20
- REMOVE FAILED DEVICE button 19
- Removing a device's action 14
- Removing devices 18
- RENAME button 5
- Repeater 2
- Replication 20
- Reset controller 20
- RESET CONTROLLER button 20
- RESET Z-WAVE CONTROLLER button 20
- Rules 2, 12, 16
- RULES button 3, 16, 17
- RUN button 12, 14, 15
- Running scenes 15

### S

- Scene 2, 12, 16
- Scenes and rules 12, 13, 14, 15, 16, 17
- SCENES button 3, 12, 14, 15
- Screen timeout 3
- Secondary controller 20
- Setpoint 9
- Switches button 6
- SWITCHES button 3, 7

### T

- Testing scenes 13
- Thermostat battery 8
- Thermostat fan mode 9
- Thermostat mode 9
- THERMOSTATS button 3, 8
- Thermostat setpoint 8
- Thermostat temperature 9
- Toolbox 3
- TOOLBOX button 3
- Triggering devices from events 16
- Trouble alert icon 19

## Index

---

### U

- UNLOCK button 10
- Un-plugged device 19

### V

- View all devices 21
- VIEW ALL DEVICES button 21
- View controllers 21
- VIEW CONTROLLERS button 21
- Viewing thermostats 8

### W

- Warranty service 23

### Z

- Z-Wave Association reports 2
- Z-Wave devices 2
- Z-Wave door locks 13
- Z-Wave network 2
- Z-Wave sirens 4
- Z-Wave switches 13
- Z-Wave thermostats 13
- Z-Wave wireless range 2



YOUR LOCAL ALARM INSTALLATION AND SERVICE PROFESSIONAL: